

1

2

3

4

D

D

C

C

B

B

A

A



.DESIGNATOR	.E6108A
.PART TYPE	.PCB FOR E6108A

BFG ENGINEERING

v.Divisione Folgore, 43, 36100 Vicenza

<i>PROJ:</i>	<i>MCRP_POWER_STAGE</i>
--------------	-------------------------

FILE: E6090

DOC TYPE: SCH PAGE 0 OF 4

DATE: SEP, 05, 2012

No part of this document may be copied or reproduced without the prior written consent of

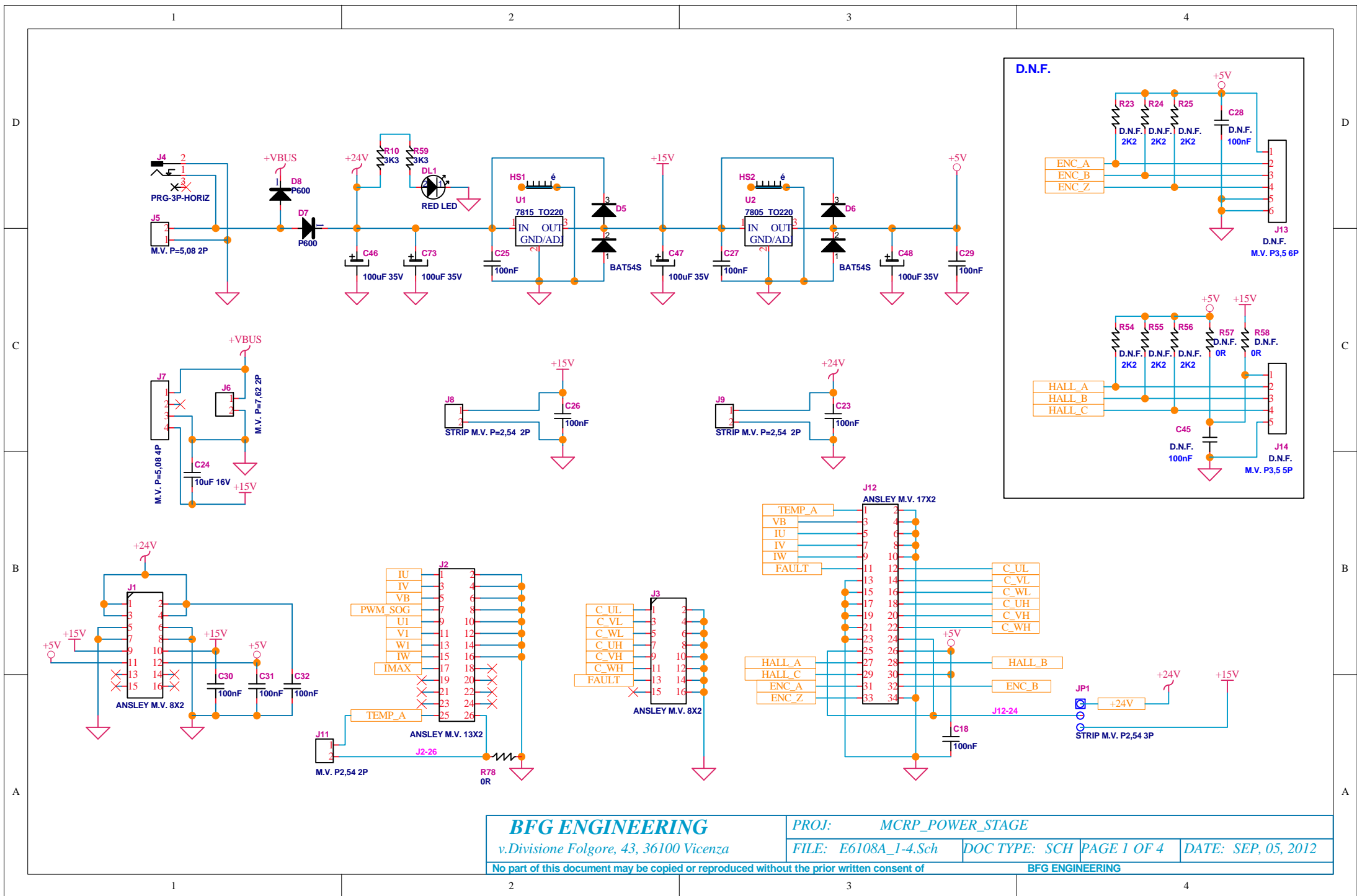
BFG ENGINEERING

1

2

3

4



BFG ENGINEERING

v.Divisione Folgore, 43, 36100 Vicenza

PROJ: MCRP_POWER_STAGE

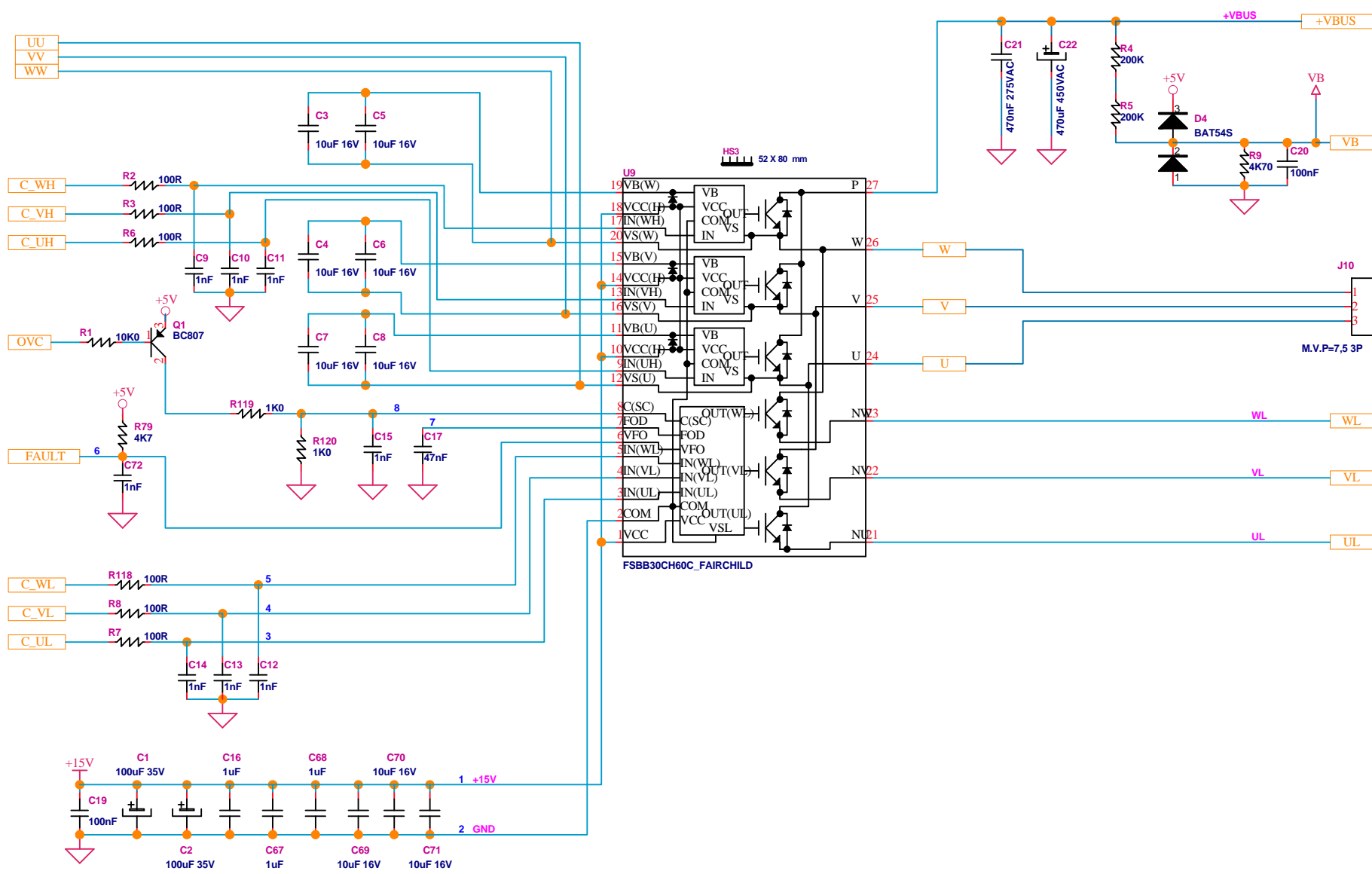
FILE: E6108A_1-4.Sch

DOC TYPE: SCH PAGE 1 OF 4

DATE: SEP, 05, 2012

No part of this document may be copied or reproduced without the prior written consent of

BFG ENGINEERING



BFG ENGINEERING

v.Divisione Folgore, 43, 36100 Vicenza

PROJ: MCRP_POWER_STAGE

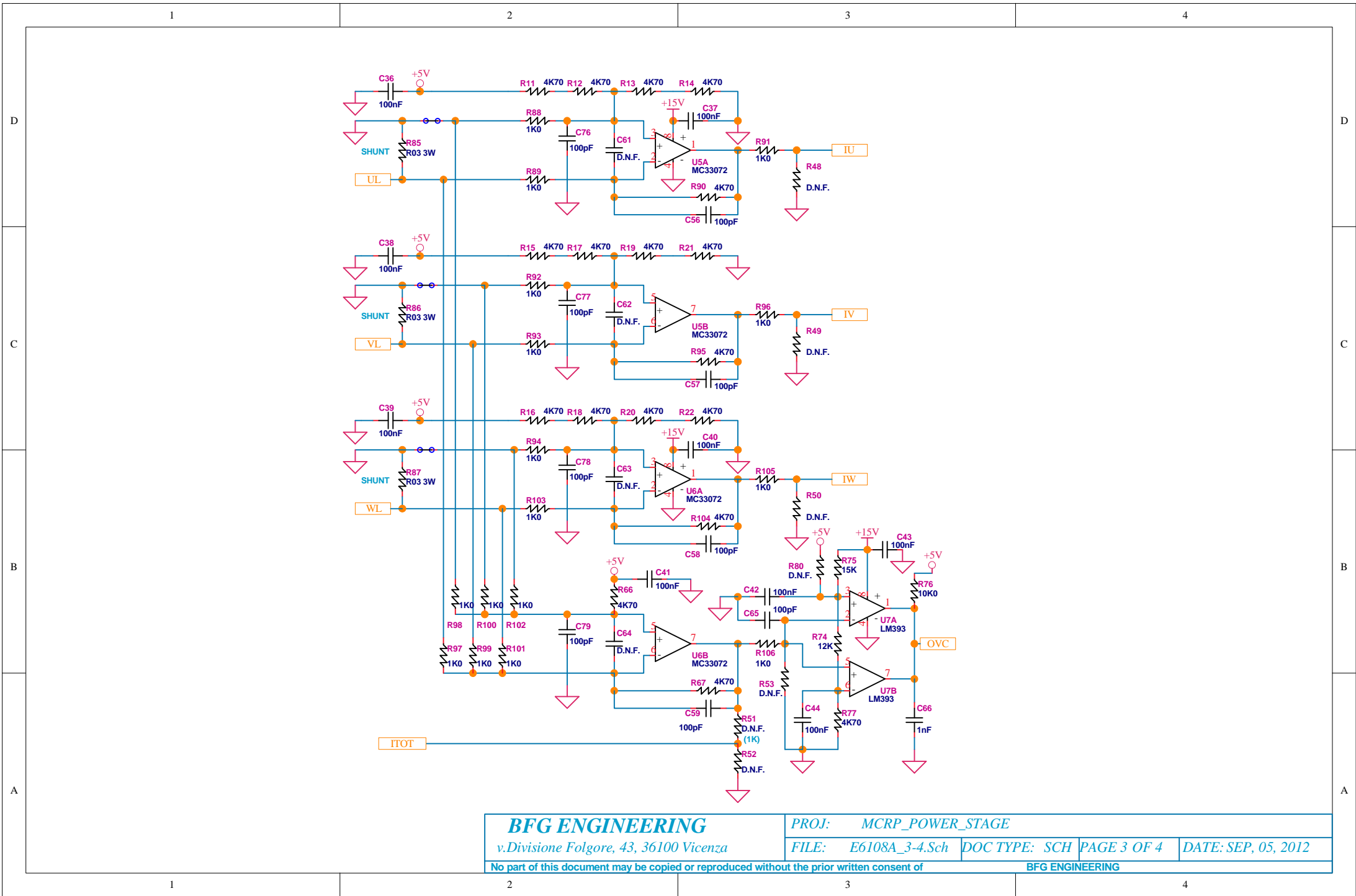
FILE: E6108A_2-4.Sch

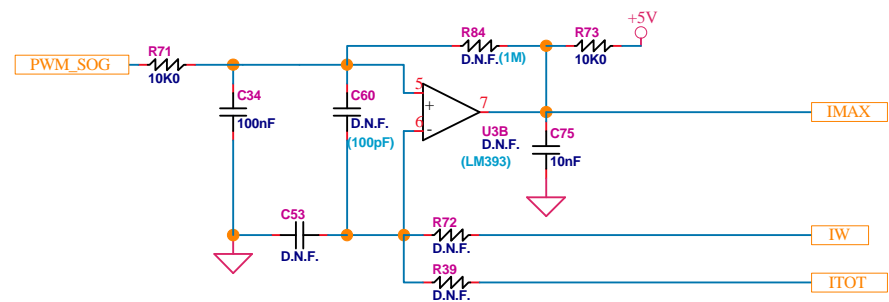
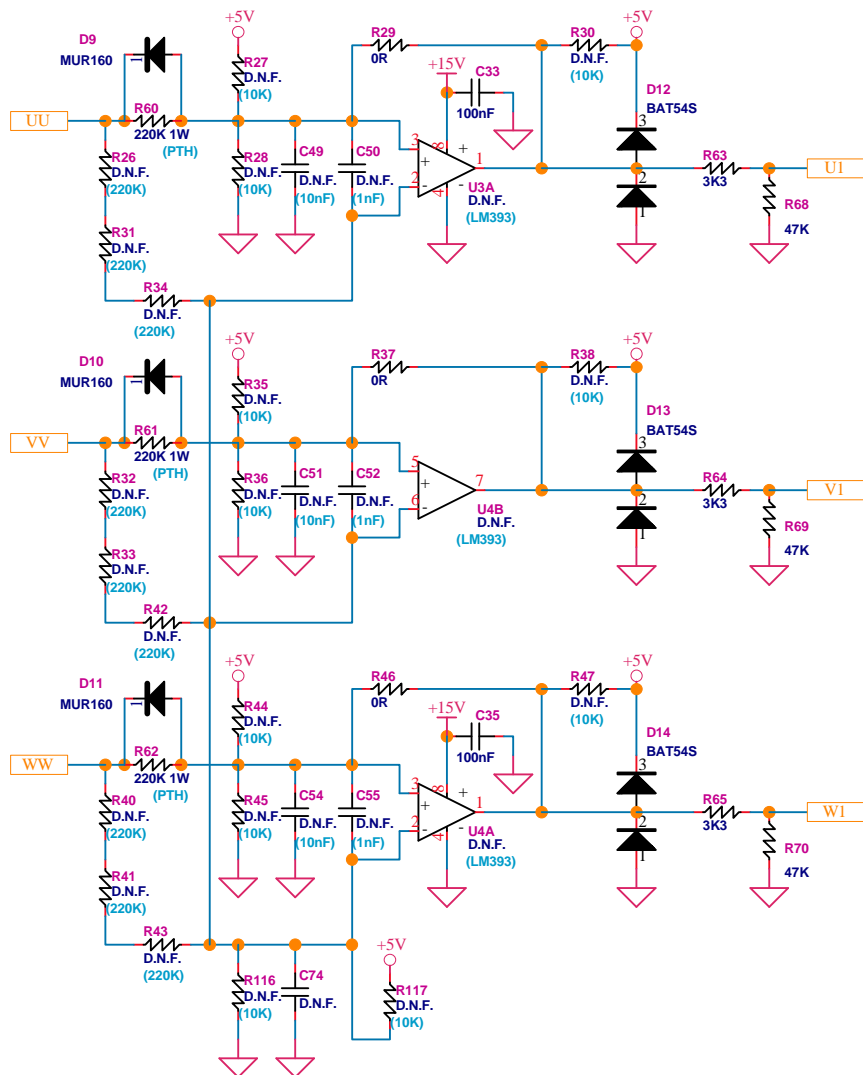
DOC TYPE: SCH PAGE 2 OF 4

DATE: SEP, 05, 2012

No part of this document may be copied or reproduced without the prior written consent of

BFG ENGINEERING





BFG ENGINEERING

v.Divisione Folgore, 43, 36100 Vicenza

PROJ: MCRP_POWER_STAGE

FILE: E6108A_4-4.Sch DOC TYPE: SCH PAGE 4 OF 4 DATE: SEP, 05, 2012

No part of this document may be copied or reproduced without the prior written consent of

BFG ENGINEERING